

LAMBHILL STABLES NEWSLETTER, SUMMER 2009

About Us

Lambhill Stables aims to transform the derelict former Lambhill stables and adjacent land on the banks of the Forth and Clyde Canal. The community facility will offer:

- a range of services including training, employment, social enterprise activity and health promotion.
- a visitor's amenity including café and viewing gallery overlooking the Possil Marshes
- an historical landmark and state of the art eco- friendly site demonstrating the canal's heritage and sustainable development.

MSPs attend successful ground breaking day

MSPs Patricia Ferguson and Patrick Harvey joined Lambhill's own Mini Gardener team and manned a spade at the groundbreaking ceremony for Lambhill Stables on the 16th April. Over 20 local people helped to plant potatoes in the community garden.

The groundbreaking marks the start of work on developing the community garden at Lambhill Stables as a facility and resource for people of Lambhill and surrounding area. Keep your eyes peeled for the potatoes coming up!



Community Garden takes shape

The garden is starting to take shape, with the land being terraced with an innovative 'compost sock' system to keep the soil in place. Further willow work also took place in February, to add to and reinforce the willow 'fedge' which marks the boundary with the Possil Marsh nature reserve. Take a walk along the canal and have a look at how things are changing!

Funding up date

Thanks to all those who have been enquiring as to how things are going with funding for the project. We have funding secured to begin work on the garden, and are waiting for a final Big Lottery application decision in August for work to begin on restoring the building. Fingers crossed for good news then!

Our architects plans have been approved with full planning permissions, and our design team are busy getting ready to go to tender for work to begin on site as soon as final funding applications are approved.

What's New?

Check out our website

Our website contains up to date information on how things are progressing with the project, as well as many photos from events at the stables.

www.lambhillstables.co.uk

We've moved!

Our office is now at Unit 7 in Balmore Industrial Estate. This puts us closer to the action as work on the project develops.

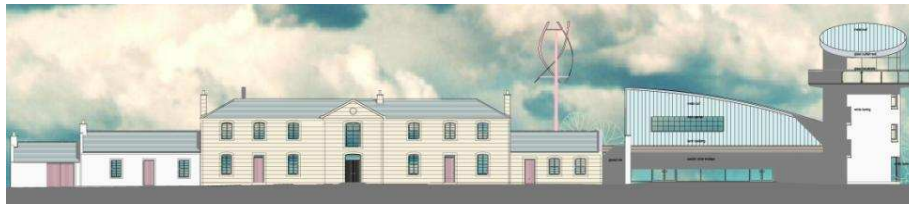
Criminal justice

We have developed partnerships with criminal justice, with people on community service orders putting something back into the community by working with the Lambhill Stables team to develop the garden.

Postcards of art work

With a grant from the Canal Area Committee we have produced a set of 6 postcards based on the artwork of the canal by local school children. These are being used at events and with partner organisations to raise awareness of the project.





Lambhill Community Council's Heritage Fayre makes it a day to remember for local residents.

On the 21st February around 100 local people attended this event, with a lecture by Prof. John Hume, boat trips on the canal, and an opportunity to find out about the Lambhill Stables project, including a chance to help design the community garden.

Working in partnership with Lambhill Stables, this day brought local people together to launch a research project into the local history and heritage of the Lambhill area (past, present and future!). A short video feature of the day can be seen on our website.

Please contact us if you would like to be involved in this project, or to share your own stories.

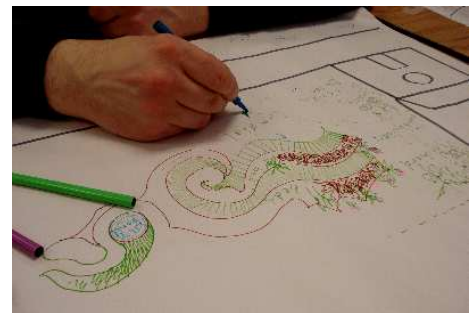


Permaculture Course: Sustainable Garden Design

Twenty local people, workers and school pupils from St Joan of Arc high school took part in a 2-day 'permaculture' workshop in January. This course looked at how we could develop the community gardens in a sustainable way, taking into account the physical landscape and the needs of the people and animals that use the area.

Working on site we began to develop plans for the layout of the gardens, and the types of plants and activities we would like to see there: from a vegetable patch to a sensory garden and a BBQ area.

For more information on permaculture go to:
www.permaculture.org.uk



Designing the garden

Exercise on the Canal

Culture and Sport Glasgow's cycling programme keeps getting bigger, with more young people taking part and more youth workers being trained as cycle leaders. Over the spring holiday, young cyclists visited the Lambhill Stables, and took time out of their bike ride to help plant some potatoes in the garden. For more info contact Charlie on 276 0920.

Watch out for local walks starting soon from the Northern Sole Mates walking network, call Megan for more information on 201 9711

Contact us

We are always looking for new members, and also need volunteers. Please fill in your details and post to the address below and we'll get back to you, or get in touch by phone or email:

Name:

Address:

I am interested in becoming a member / volunteering for Lambhill Stables (please delete as appropriate)

Lambhill Stables, Unit 7, 14 Drynoch Place, Balmore Industrial Estate, Glasgow G22 7QQ
Tel/fax: 0141 336 4843, email: info@lambhillstables.co.uk