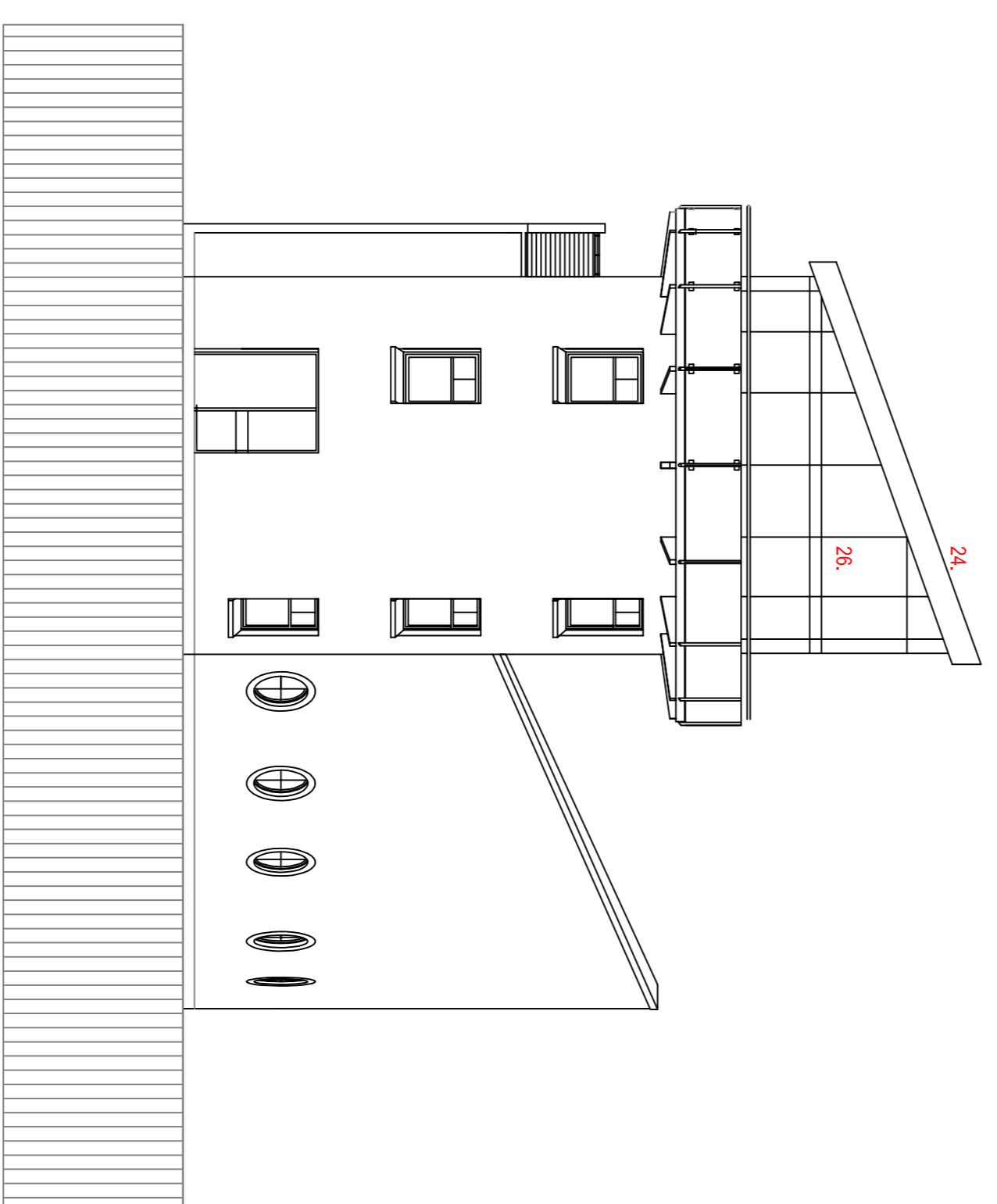
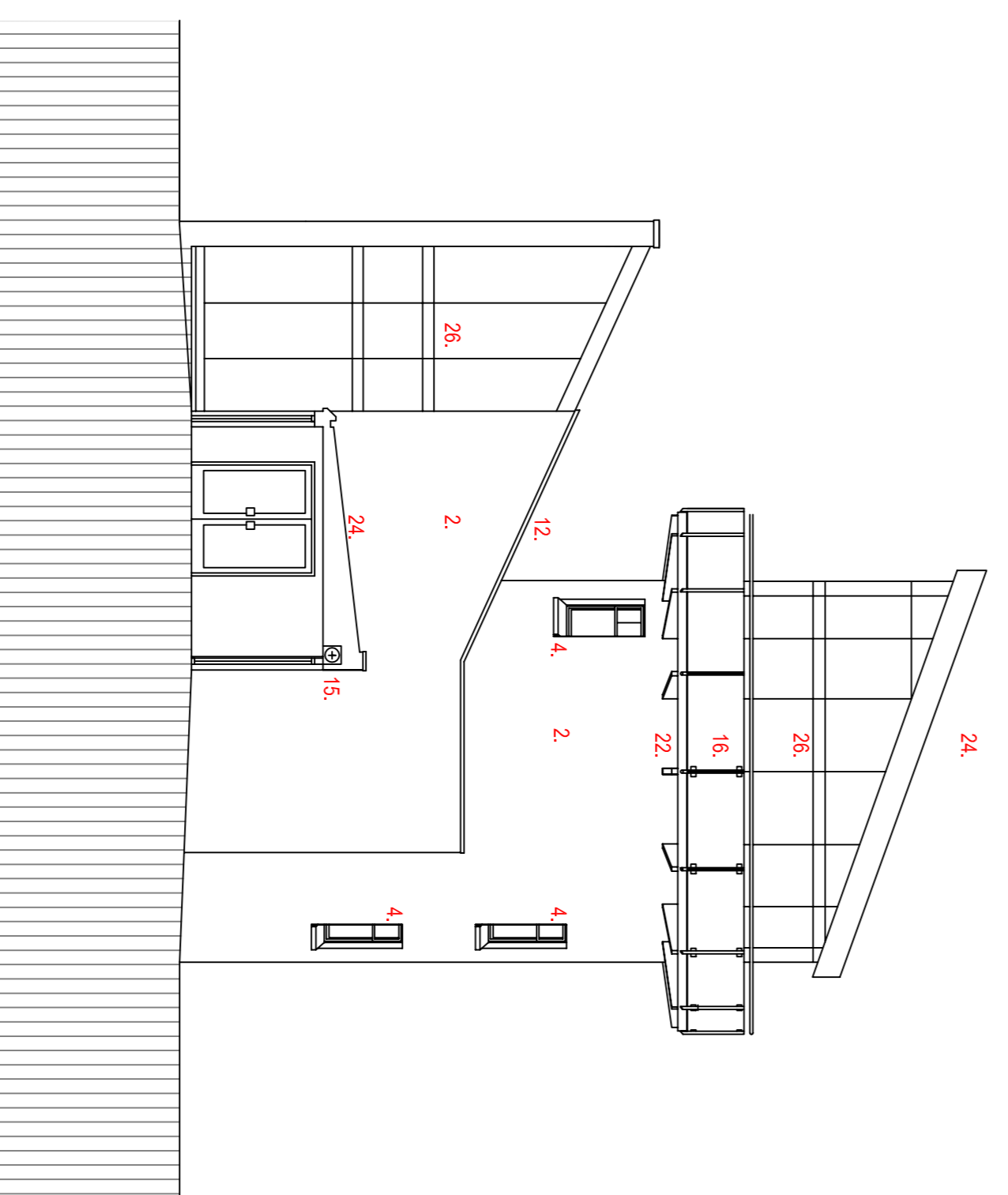


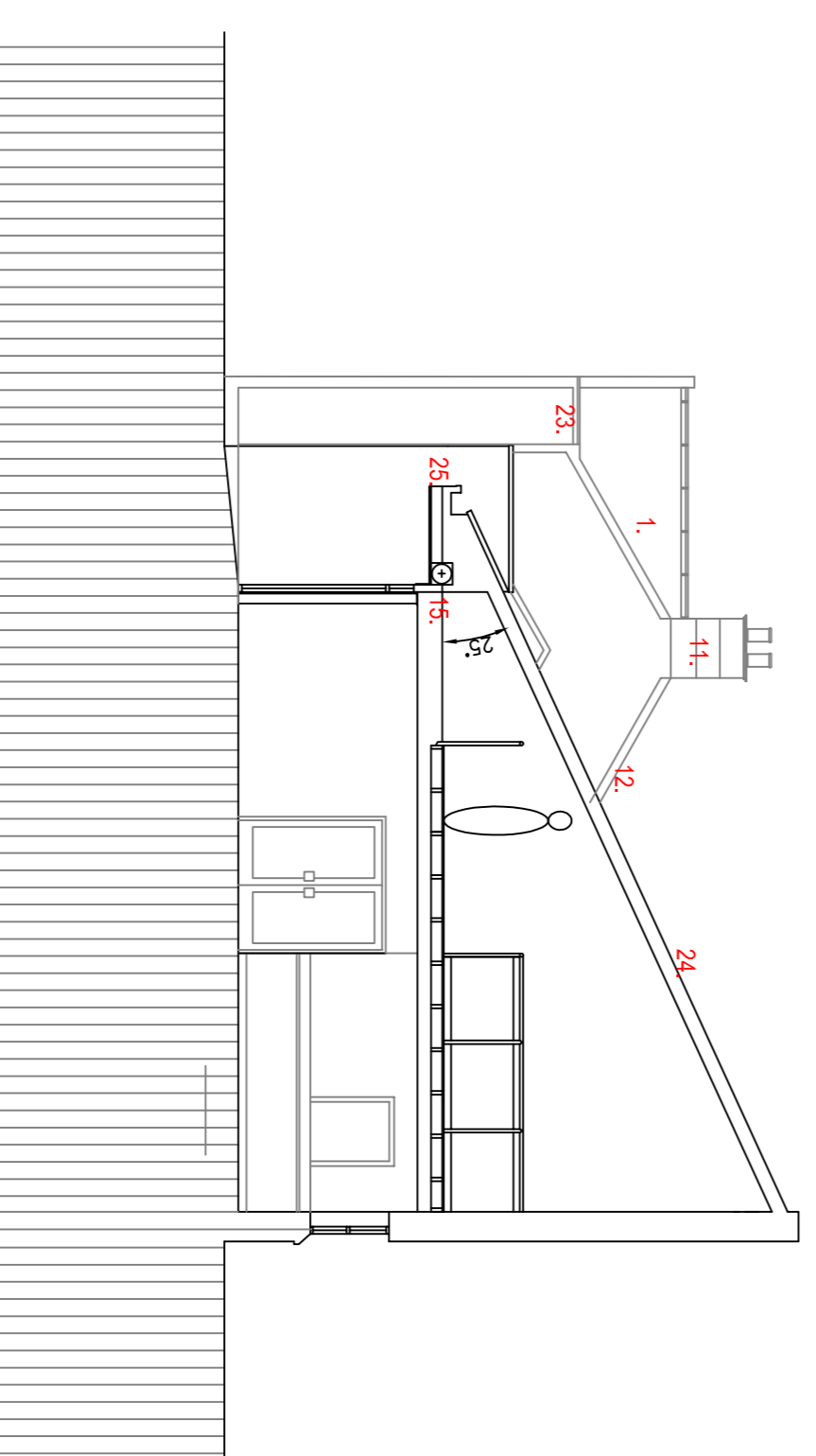
PROPOSED ELEVATION TO NORTH



EAST ELEVATION



SECTIONAL ELEVATION A-A



SECTION B-B

FINISHES

1. natural slate roof blue/black
2. harling - painted white
3. existing masonry pointed lime mortar
4. timber sash and case windows painted white
5. timber opening windows painted white
6. white painted timber clerestory windows with 10% black reflective glass
7. timber shutters stained blue
8. extract fan grille white
9. passive ventilation cowl
10. zinc ridging and hips
11. rebuilt stone chimney breast
12. Code 5 lead capping to skew
13. Wind generator
14. stained timber doors - red
15. roller shutters white
16. ss and glass fronted balcony
17. precast art stone 3 course cills to match stone
18. precast art stone margins 125mm wide.
19. stainless steel boiler flue
20. Code 6 lead sheeting
21. facing brick base course brown
22. supporting steelwork painted blue
23. c.i. rainwater goods
24. KALZIP metal roofing grey
25. Larch weatherboarding
26. aluminium curtain walling painted white

CONSULTANTS NOT REGISTERED REGISTERED ARCHITECTS ARCHITECTS REGISTERED WITH THE ARCHITECTS REGISTRATION BOARD

MILLER
PARTNERSHIP

CHARTERED ARCHITECTS/ARCHITECTS REGISTERED
19 Royal Crescent Glasgow G3 7SX
TELEPHONE 0141 331 1101
11 Deaconson Road London W8 4JH
TELEPHONE 0208 993 8880

PROJECT
Lambhill Stables, Conversion of Listed Building
Glasgow

CLIENT
The Coach House Trust

DETAILS
elevations - round tower 2

SCALE	1:100	DRAWN BY	PMA
DATE	29/07/07	CHECKED BY	
DO NOT SCALE FROM THIS DRAWING. ALL DIMENSIONS TO BE CHECKED ON SITE.			
ASSUMPTIONS SHOULD NOT BE MADE.			

PROJECT NO.	5335	DATE	015
REVISIONS			